



Oriel High School
Uniform and Appearance
2025/26



Oriel High School Uniform 2025/26

At Oriel High School, our motto is "*Empowered to achieve, inspired to excel.*" A strong sense of belonging and shared pride in our school community is important to us all. First impressions matter; our school is judged not only by how our students behave but also by how they present themselves.

Our uniform plays a key role in promoting safety, decency, and equality. It is designed to be inclusive, allowing students who are exploring their gender identity to wear the items they feel most comfortable in.

We believe that wearing uniform makes a powerful statement about unity, shared ambition, and the pursuit of excellence. It helps students take pride in themselves and their school.

We expect all students to look smart and wear the uniform with pride. Our uniform has been thoughtfully developed to be both distinctive and special. We believe that looking smart supports focused thinking and effective learning.

If a student does not meet our uniform expectations, staff may direct them to adjust or change their appearance. The school has a clear and consistent approach to uniform, and we ask all parents and carers to support this by ensuring their child arrives in the correct uniform each day.

Oriel High School follows Department for Education guidance, which allows the Headteacher to send a student home to correct a uniform issue. For example, students who arrive at school in incorrect uniform and cannot correct their dress, will be sent home to correct and return. They will not be registered as attending school until they attend in full, correctly worn uniform.

Students who consistently fail to meet our expectations for appearance may be sanctioned and could be at risk of permanent exclusion.

If you experience any difficulties providing the correct uniform for your child, please contact their mentor as a first step. We are confident that we can help resolve any uniform-related problems you may have.

Uniform supplier

Our school uniform supplier is Monkhouse who are trusted experts in supplying uniform. Monkhouse have a uniform shop based at the school that is open during the school term. Oriel High School values the uniform shop and the opportunity it gives our families and students to view and try on uniform items.

Monkhouse also provide an efficient online ordering service for families.

Website: www.monkhouse.com.

Search for: Oriel High School (URN-134042)

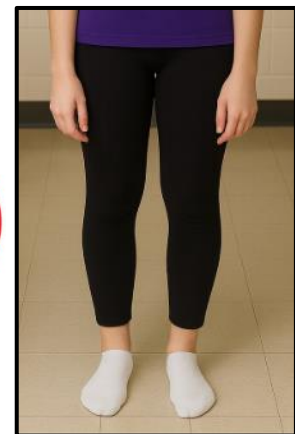
Main uniform items and minimum requirements for wearing.

- **Purple blazer:** With the Oriel High School crest, worn at all times around the school unless permitted by the Head Teacher. Teachers may permit students to remove blazers in lessons.
- **Trousers:** Plain black, formal, straight legged, full length. The waist band must sit no lower than the hips and undergarments, including shorts, should not be visible at any time. Secondary leg coverings, such as tracksuit trousers and sports shorts, must not be worn under school trousers.
- **Shirt:** Plain white formal shirt which must always be fully tucked into the waistband.
- **Belt:** Plain black belt (if required). No fashionable, branded, or large buckles permitted.
- **Skirt:** Oriel tartan kilt. To be worn with the bottom hem no higher than student's fingertips when the student's arms and hands are held straight at their sides and undergarments must not be visible at any time.
- **Blouse:** Plain, white, short-sleeved.
- **Tie:** Oriel tartan school tie (boys only) worn to the collar and at an appropriate length with the blade (wide end) of the tie front and facing forward.
- **Socks:** Plain black socks with trousers OR plain black/natural tights with a kilt. Plain white ankle socks may only be worn with a kilt, but not in addition to tights.
- **V-neck jumper:** Plain black, with no logo or branding.
- **Coats/Jackets:** These can be worn on the way to school and home again, and any time the student is outside the school building at break times and lessons. Outdoor coats and hooded jackets are not permitted to be worn inside the school building at any time.
- **Tights:** must have a foot and must be black or natural (plain) in colour. Leggings are not permitted. See examples below:

Tights



Leggings



Shoes

- Plain black leather, formal, 'business style' shoes that can be polished.
- Ankle boots (Hi-tops), canvas shoes, or trainers of any material (including leather) are not permitted.

Examples of the correct type and style of shoe can be viewed below:

Acceptable shoes (for guidance):



Unacceptable shoes (for guidance):



Hoodies

Hoodie jumpers are not permitted at any time and cannot be worn as coats. These garments may be confiscated and retained until the end of the school day.

Hooded jackets with a full zipper (see blue illustration below) are classed as coats and must be worn in accordance with the rules above regarding coats and jackets.



Hoodie jumper: Not permitted)



Hooded jacket: permitted when worn as a coat.

Hair, Nails & Makeup

- Hair should be a natural colour, appropriate to the individual and worn in a neat style for school. Long hair must be tied back for practical lessons.
 - Shaved-pattern hair styles, and dyed hair are not permitted.
 - Hair bands and clips should be plain, functional, non-decorative, discreet and of a dark colour.
 - Head scarves, if worn for cultural or religious reasons, should be plain black, white or purple.
 - Nail varnish and all false nails (including acrylics, gels, dip-powder and press-on) are not permitted.
 - Blemish/acne patches are not permitted.
 - Make-up should be discreet.
-

Jewellery

With a few exceptions described in this section, jewellery is not a part of the school uniform.

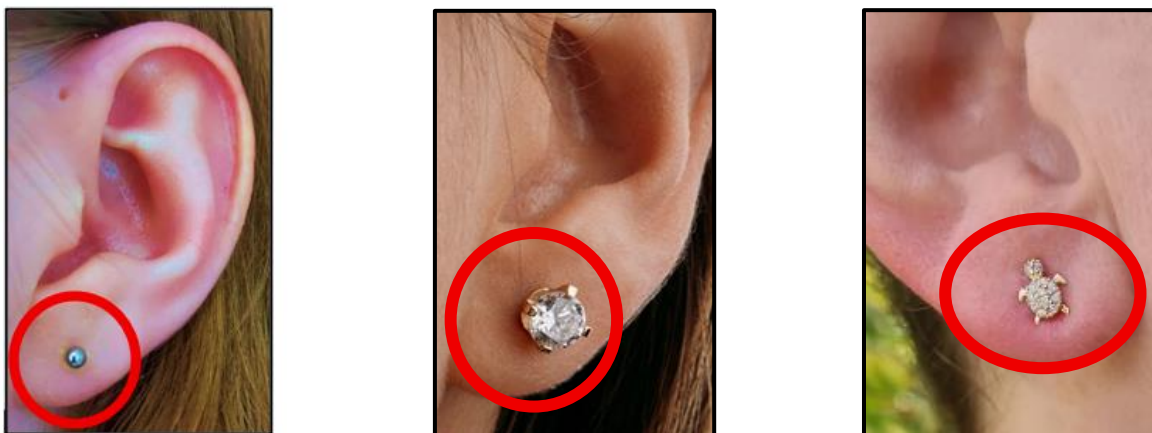
Ear Studs: Students may wear one pair of ear studs of not more than 5mm in diameter, in their ear lobes (the area indicated below within the red boundary).

Both ear piercings must be removed for PE. Any student who cannot remove their studs (due to infection risk from recent piercing, for example) will not be permitted to take part in the lesson. However, they will be required to change into their PE kit and assist in the lesson as directed by staff.

The use of band-aids/plasters/tape to cover piercings is not permitted.

All other types and location of piercings, including any other part of the ear, face, tongue, or body are strictly prohibited.

Permitted earlobe piercing examples, with lobe limit defined:



Wristwatch: A plain wristwatch is also permitted. In all cases, the school will decide if a wristwatch meets the criteria of 'plain'. Examples (for guidance only) include:



Religion-mandated jewellery

In accordance with the DfE guidelines, the wearing of jewellery mandated by a student's religion is permitted. Traditional, sentimental and/or non-mandated jewellery items, such as the Christian crucifix or cross, are not permitted.

All other jewellery items of any material or style are not considered to be part of the school uniform and must not be worn. For clarity, this includes, but is not limited to, the following items:

- Bangles and bracelets - especially welded bracelets.
- Brooches and non-school-issued badges
- Necklaces, neck chains
- Charms, amulets
- Rings, toe rings
- Flesh tunnels
- Cufflinks

Body Art

Students are not permitted to draw or write on their legs, hands or arms and excessive/inappropriate markings may result in the student being asked to remove them. This rule does not include temporary festival and/or ceremonial markings for religious and cultural purposes. For example, henna tattoos for Diwali (mehndi).

PE Kit

All students are expected to wear the PE uniform when participating in PE activities, including extra-curricular activities:

PE uniform required:

- Purple Oriel PE Polo Shirt
- Purple Oriel PE jumper
- Plain black shorts
- Black Oriel skort
- Moulded stud football/rugby boots for 3G pitch (see below images)
- Plain black tracksuit trousers/running leggings.
- Black football socks
- Black or white sports socks

All uniform items should be clearly marked with the students' name. All jewellery must be removed before PE lessons commence.

3G Football Pitch: Footwear

Please remember that only the correct footwear can be worn on the 3G pitch.

Anyone going onto the playing surface must be wearing the recommended footwear.

No trainers or other flat-bottomed footwear.

There are no exceptions to this requirement, and it is only through 100% compliance within our own school that we can enforce this with those visiting the school.

Adhering to this rule will ensure that the pitch is kept in its best condition for as long as possible.

Please see the examples of recommended footwear below:

RECOMMENDED FOOTWEAR:



Hard ground plastic moulded stud



Artificial turf training shoes

FORBIDDEN FOOTWEAR:



Soft Ground (SG) TEAR THE SURFACE

Sole features removable, replaceable screw-in studs and typically come in a six-stud configuration, with four at the forefoot and two at the heel.



Soft Ground Pro (SGP) TEAR THE SURFACE

Also known as Hybrid or Mixed Stud, the sole plate comprises of a combination of conical screw-in studs and moulded studs, which are most commonly bladed.



Blades CAN CAUSE INJURY

Sole plates feature multiple straight slightly shorter, evenly dispersed studs that can restrict movement and turning which could cause injury.



Flat Sole (Indoor) NO GRIP & FLATTEN SURFACE

Sole made up of non-marking materials such as moulded gum rubber and feature pivot points, flex grooves and herringbone patterns.

Problems meeting uniform expectations.

Students must have a medical note from a doctor if they need to wear alternative footwear to school due to a medical condition or serious injury. The uniform dress requirements will always be amended to accommodate the physical well-being of individual students with genuine, evidenced medical conditions. For example, students with foot or leg injuries may be unable to wear school shoes.

If shoes become broken, lost, left at another home etc. it is the student's responsibility to bring a note written in their planner from home and hand it to their mentor. Where possible the correct shoes are to be worn the next day. If replacement shoes are required these are to be purchased the next weekend at the latest, ready for the start of the new week. Any substitute shoe must be as close to the acceptable school shoe as possible.

Sanctions and reasonable adjustments to the policy.

In accordance with guidance published by the Department for Education, the school may apply sanctions to students for non-compliance with uniform requirements.

In our commitment to maintaining a positive and respectful school environment, Oriel High School reserves the right for all staff to take reasonable action(s) in addition to the provisions in this policy document when taken in the support of prioritising the well-being and safety of all students and staff, and for preserving the effective function, operation, and reputation of the school.
